

### AACM-A Series

#### Features

- Qualified to AEC-Q200.
- RoHS compliance.
- Halogen Free.
- AACM series realizes small size and low profile.
- Common mode filter, good temperature resistance.
- The products contain no lead and also support lead-free soldering.

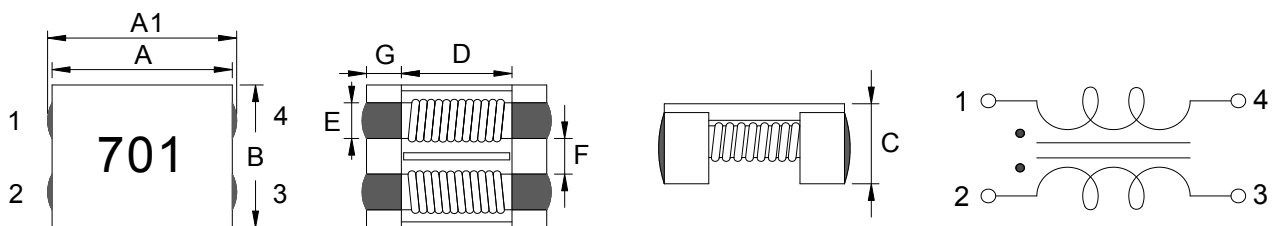
#### Applications

- Headlights, Car USB Interface, Audio, Car DVD.

#### Test Conditions

- All test data is referenced to 25°C ambient.
- Operating temperature range -40°C to +125°C.(Including self - temperature rise).
- The part temperature(ambient + temp rise)should not exceed 125°C under worst case operating conditions.  
Circuit design,component placement, PCB trace size and thickness,airflow and other cooling provisions all affect the part temperature,part temperature should be verified in the end application.

#### External Dimensions (Unit:mm)



TYPE	A	A1	B	C Max	D typ	E typ	F typ	G typ	Q'TY/Reel
AACM7060	7.0±0.5	7.5±0.5	6.0±0.5	4	3.5	1.5	1.5	1.7	1500
AACM9070	9.0±0.5	9.5±0.5	7.0±0.5	4.8	5.7	1.5	2	1.7	700
AACM1211	12.0±0.5	12.5±0.5	10.8±0.5	6.5	7	2.7	2.5	2.5	500
AACM1513	15.0±0.5	15.6±0.5	13.0±0.5	6.6	9.4	2.6	3.8	2.5	350

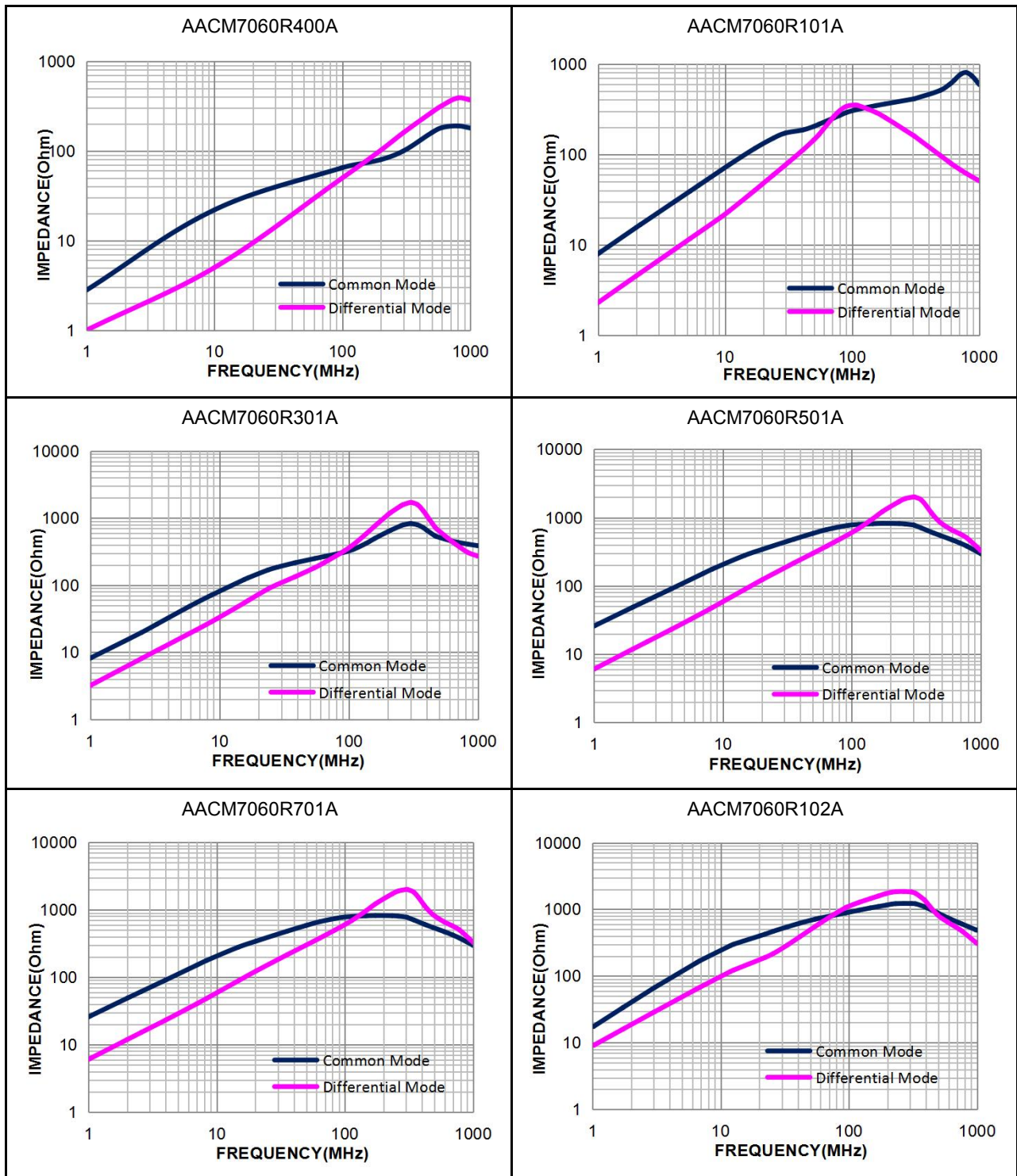
#### Part Number Code

<u>AACM</u>	<u>07</u>	<u>60</u>	<u>R</u>	<u>701</u>	<u>A</u>
Series Name	Dimensions: L*W	Dimensions: H	Tolerance	Inductance	Materials

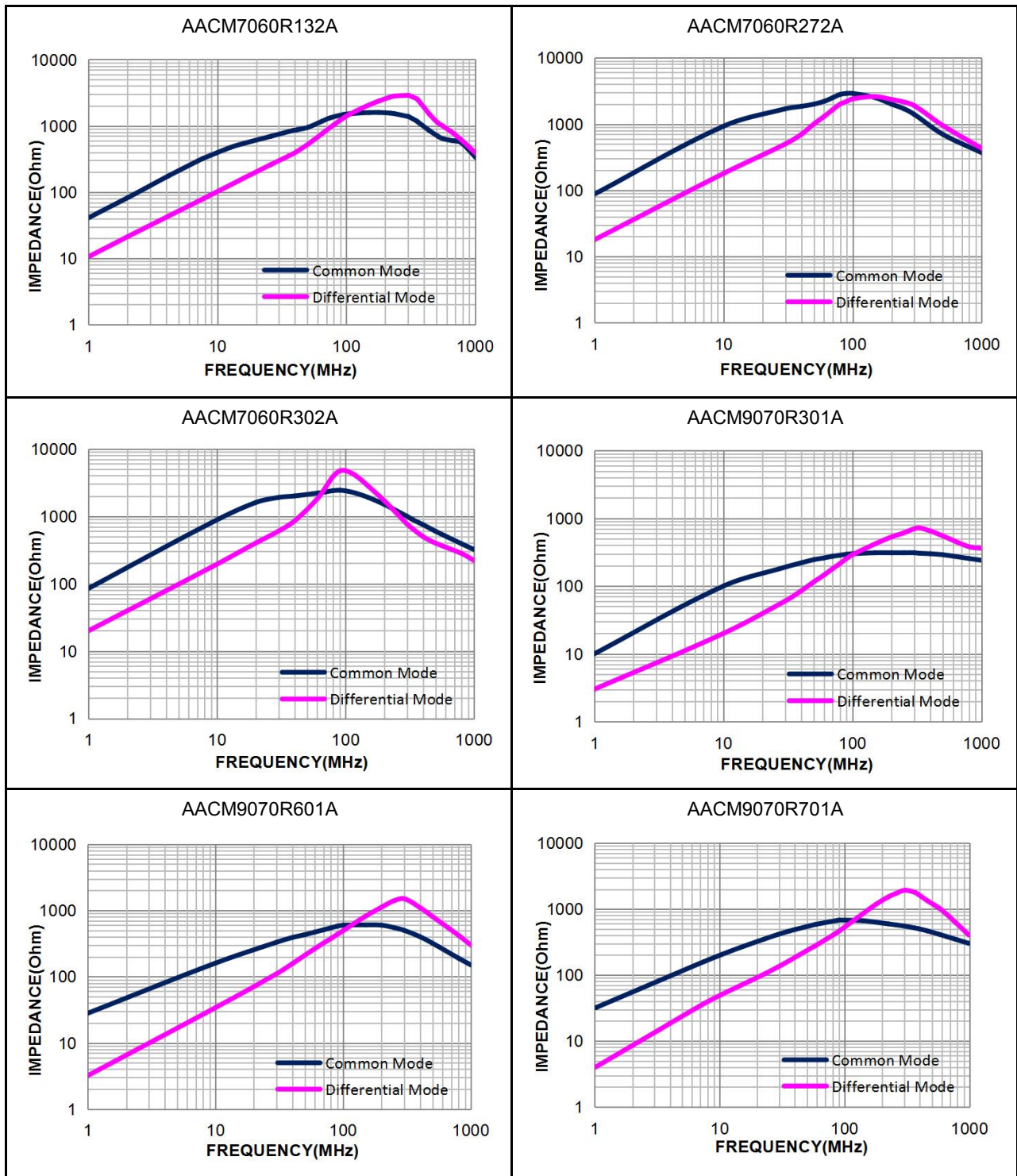
### AACM-A Series

Part Number	Z( $\Omega$ ) 100MHz/0.1V		DC Resistance (m $\Omega$ ) Max.	Rated DC Current (A)Max.	Insulation Resistance (M $\Omega$ )Min.	Rated Voltage (V)Max.
	Min.	Ref.				
AACM7060R400A	40	70	5	15	10	125
AACM7060R101A	100	140	10	9	10	125
AACM7060R301A	225	300	10	5	10	125
AACM7060R501A	275	450	10	5	10	125
AACM7060R701A	500	700	15	4	10	125
AACM7060R102A	800	1020	17	3	10	125
AACM7060R132A	910	1300	21	2.5	10	125
AACM7060R272A	2000	2700	63	1	10	125
AACM7060R302A	2500	3000	75	0.9	10	125
AACM9070R301A	225	300	6	6	10	50
AACM9070R601A	450	600	8	5.5	10	50
AACM9070R701A	500	700	10	5	10	50
AACM9070R102A	750	1000	13	4	10	50
AACM9070R222A	1700	2200	60	2.5	10	50
AACM9070R302A	2500	3000	75	3	10	50
AACM1211R800A	80	230	2	10	10	125
AACM1211R701A	500	700	6	8	10	125
AACM1211R801A	600	800	8	8	10	125
AACM1211R102A	750	1000	14	6	10	125
AACM1211R222A	2200	2500	35	1.8	10	125
AACM1513R301A	225	300	5	13	10	80
AACM1513R501A	400	500	6	10	10	80
AACM1513R701A-13A	500	700	5	13	10	80
AACM1513R102A	800	1000	10	9	10	80
AACM1513R152A	1200	1500	23	5	10	80

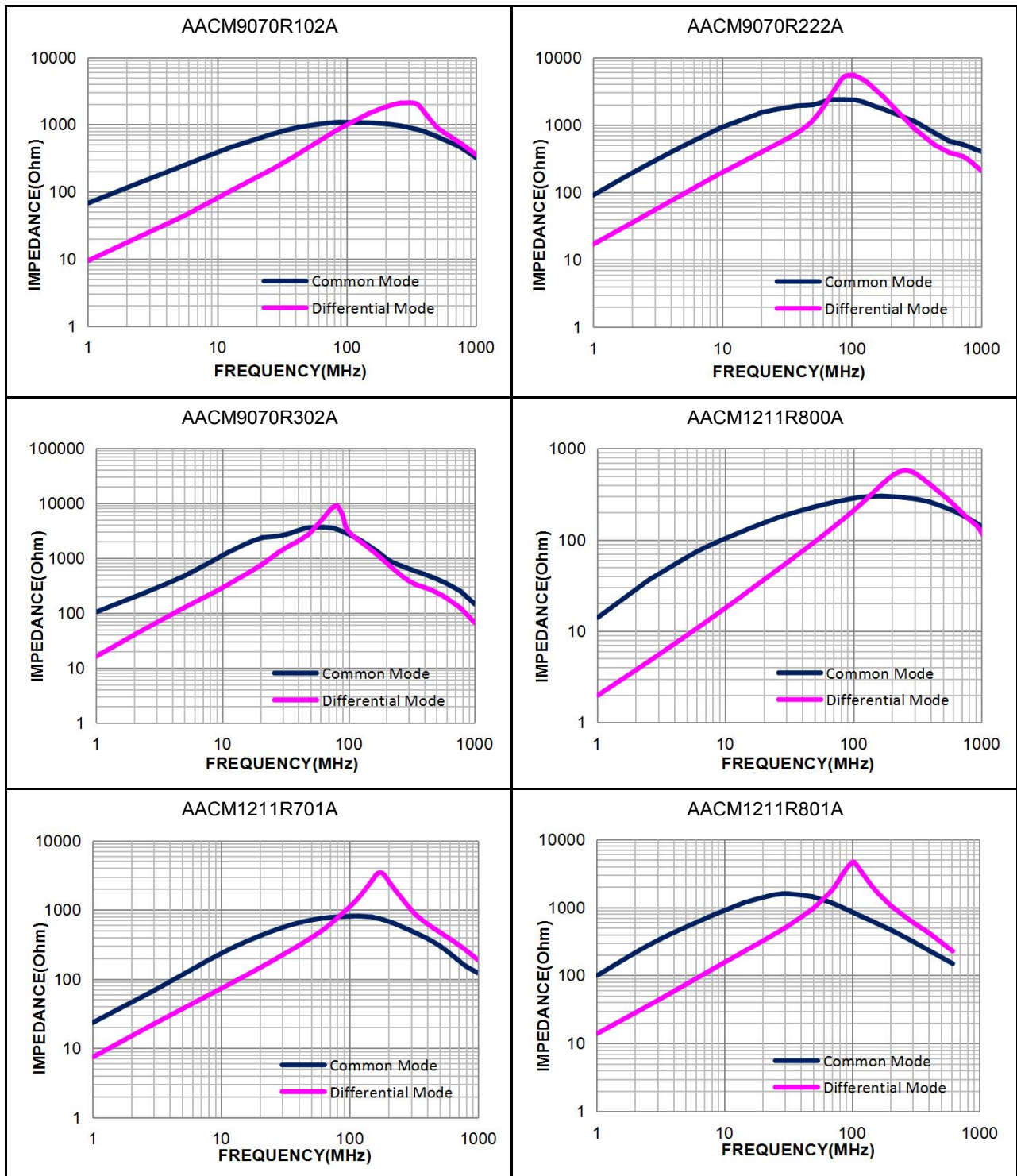
### Characteristics(Reference)



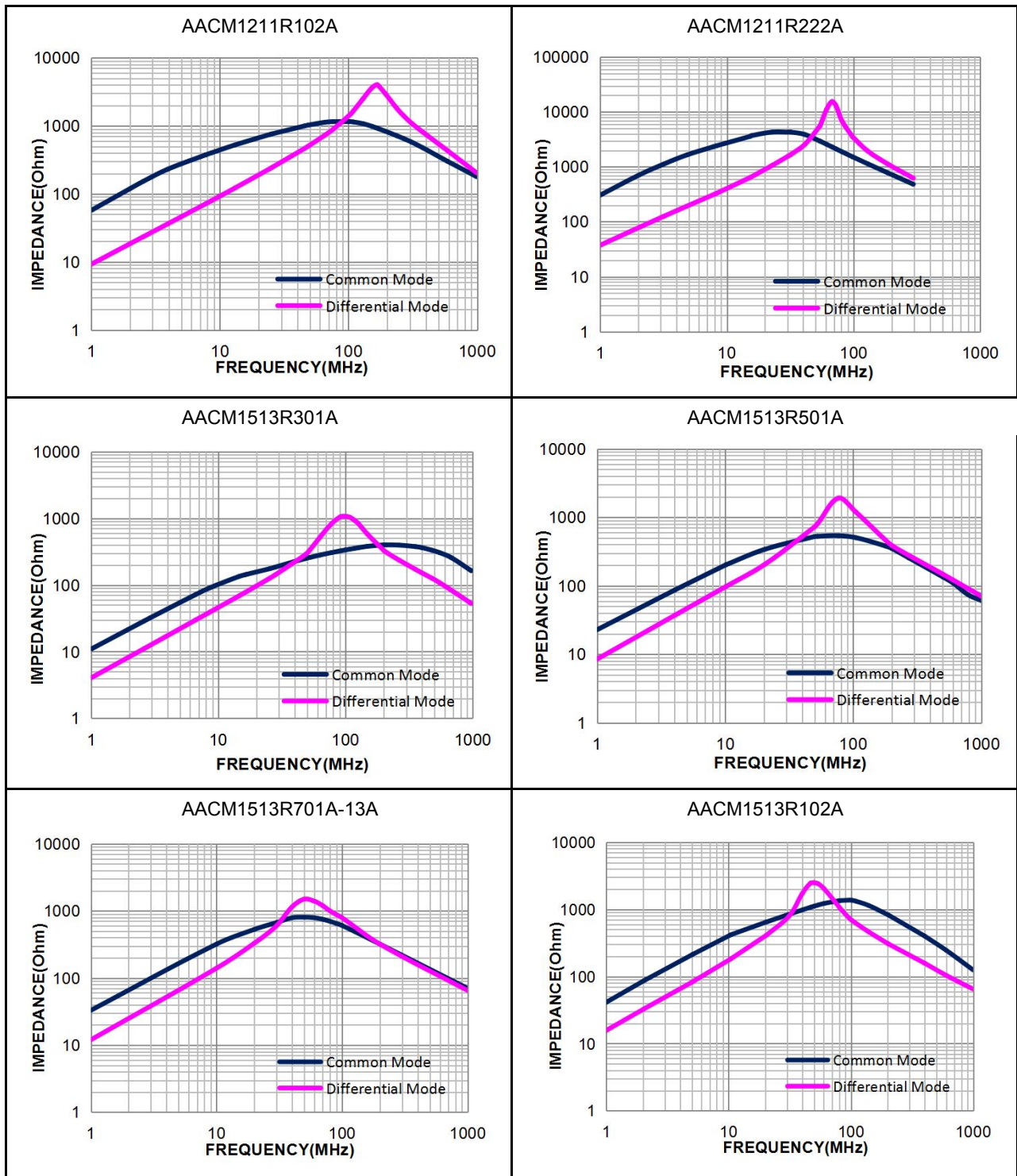
### Characteristics(Reference)



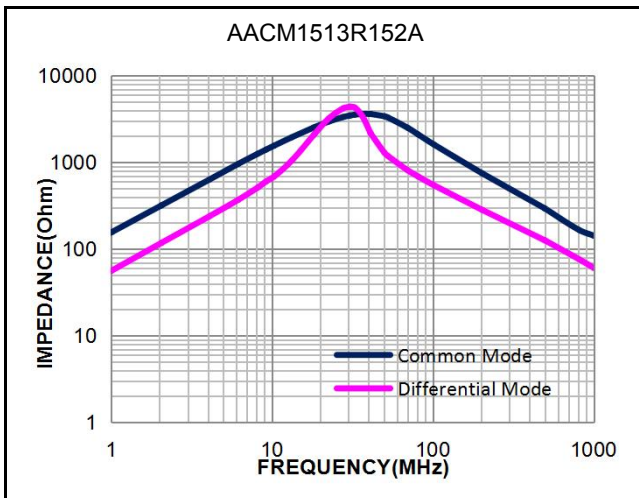
### Characteristics(Reference)



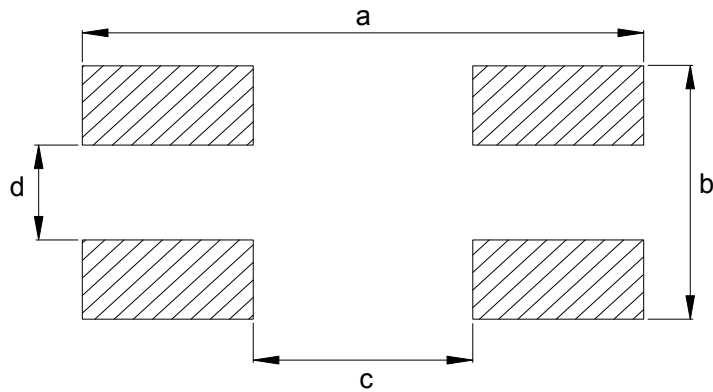
### Characteristics(Reference)



### Characteristics(Reference)



### Recommended Soldering Conditions



TYPE	a Typ	b Typ	c Typ	d Typ
AACM7060	8	5	3	1.5
AACM9070	10.5	5.5	5	1.5
AACM1211	12.5	8.5	6.5	2
AACM1513	16	9.5	8.8	3.3